

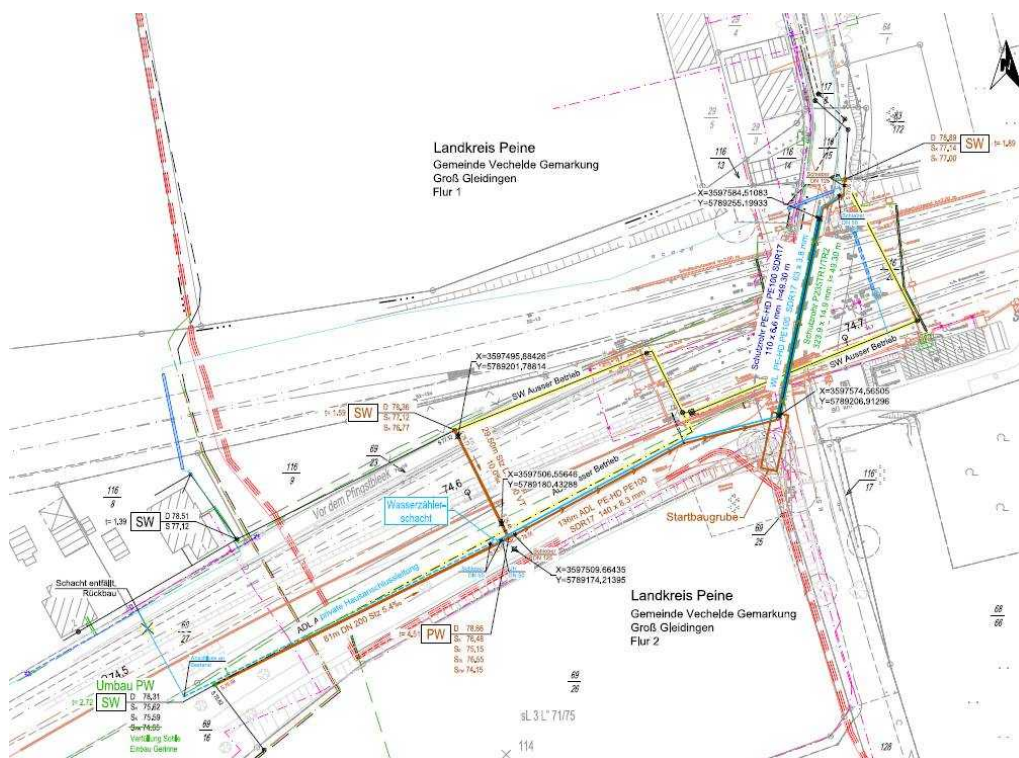
The Peine Water Board – supply and disposal pipes under the German Railways crossroad near Groß Gleidingen

Short description

Extending the railway line from Brunswick to Hildesheim from one to two tracks, it was necessary to restructure and renew the supply and waste disposal pipes in the area of an existing railway crossing. The Deutsche Bahn (DB) guideline RIL 180 01 "Crossing of gas and water pipelines" and its safety measures had to be applied to the construction of crossing pipes within the Peine Water Board.

The two required crossings within the DB-track were constructed with the press and drill method and the micro tunneling method, respectively. Among the renewal of the crossings,

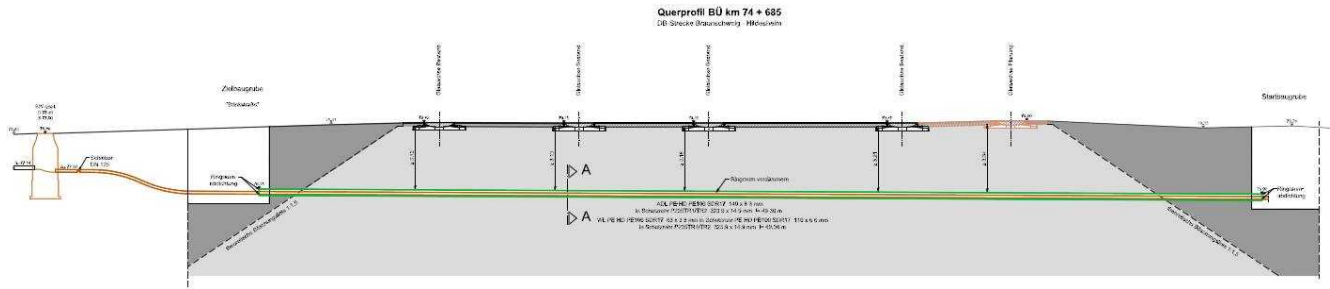
it was also required to construct a new wastewater pump station and various wastewater gravity channels.



Client	The Peine Water Board
Time Period	2012 - 2013
Construction Costs	ca. 350,000 €
Route Length	ca. 520 m
Pipe Material	PE-HD stoneware
Construction Types	50 m press and drill method 30 m microtunneling 150 m HDD DN 60 and DN 125

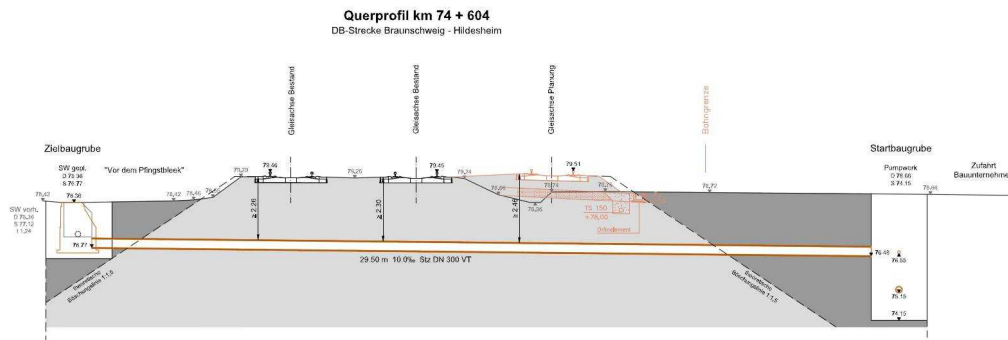
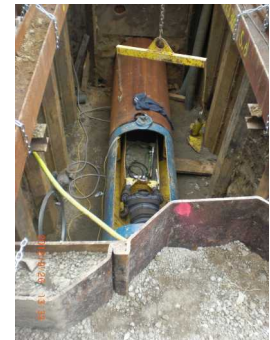


Wastewater Treatment
Drainage
Area Development
Geo and Canal
Information Systems
Expert Opinions
Project Controlling
Health and Safety Coordination
Road Construction
Transportation
Surveying
Visualization
Hydraulic Engineering



Pipe Lengths

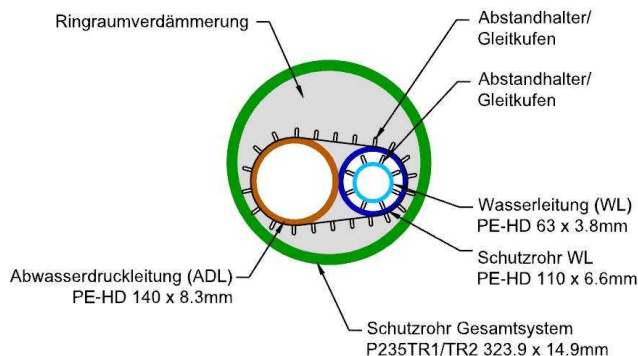
- ca. 140 m wastewater pressure pipelines DN 125 (PE-HD)
- ca. 220 m drinking water pipelines DN 300 (PE-HD)
- ca. 80 m wastewater gravity channels DN 200 (stoneware)
- ca. 50 m press and drill method DN 300 (stoneware)
- ca. 30 m micro tunneling DN 300 (stoneware jacking pipe)
- 1 wastewater pump station



Scope of Services

- planning, construction supervision and management of the entire project
- coordination of planning with the Deutsche Bahn AG
- health and safety coordination
- engineering phases 1-9 of the German Fees Scale for Architects and Engineers (HOAI)
- local construction supervision and management

Schnitt A-A



Wastewater Treatment

Drainage

Area Development

Geo and Canal

Information Systems

Expert Opinions

Project Controlling

Health and Safety Coordination

Road Construction

Transportation

Surveying

Visualization

Hydraulic Engineering